

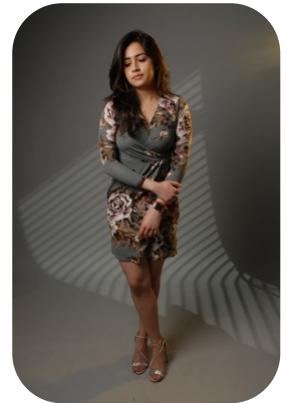
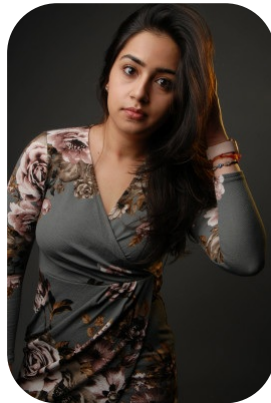


Abhi G



Age: 25-30	Height: 5ft6inch	Eye Colour: Brown	Accent: South Asian
Gender:F	Weight: 58kg	Waist: 27	
Location: London	Shoe Size: 5	Bust: 32	
Drives: Yes	Hair Color: Black	Hips: 38	

Talents
COMMERCIAL MODELS



Additional Talents:
SWIM BIKE TENNIS

FOR ANY INQUIRIES PLEASE CONTACT US

0207 834 66 60 - Office

www.fusionmng.com

cast@fusionmng.com

