

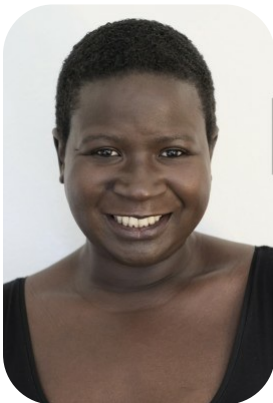
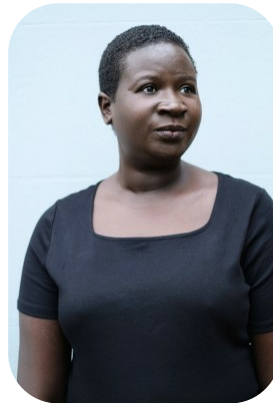
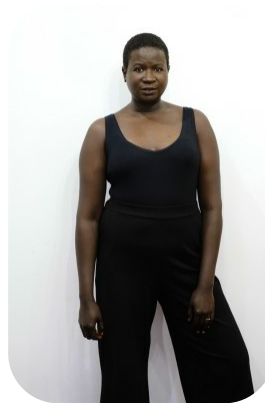


# Agi Touray



Age: 31-40	Height: 5ft11inch	Eye Colour: Black	Accent: African
Gender:F	Weight: 95kg	Waist: 40	Bust: 42B
Location: London	Shoe Size: 7	Hips: 44	
Drives: Yes	Hair Color: Black		

Talents  
COMMERCIAL MODELS, EXTRAS



Additional Talents:  
BIKE

FOR ANY INQUIRIES PLEASE CONTACT US

0207 834 66 60 - Office

[www.fusionmng.com](http://www.fusionmng.com)

[cast@fusionmng.com](mailto:cast@fusionmng.com)

**FM** FUSION  
MANAGEMENT  
TALENT & MODEL MANAGEMENT AGENCY