

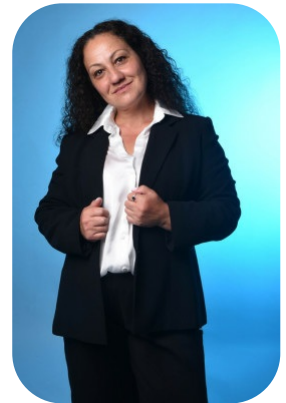
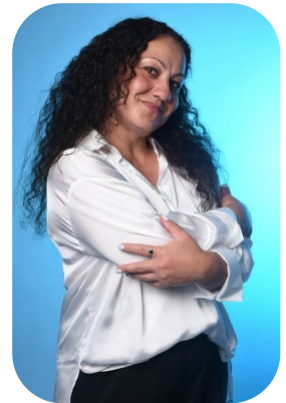


# Ana Emir



Age: 51-60	Height: 5ft1inch	Eye Colour: Brown	Accent: London
Gender:F	Weight: 77kg	Waist: 33	Bust: 38.5
Location: London	Shoe Size: 5	Hips: 43	
Drives: Yes	Hair Color: Black		

Talents  
MATURE MODELS, EXTRAS



Additional Talents:  
HORSE RIDE- SKI  
GYM FITNESS

FOR ANY INQUIRIES PLEASE CONTACT US

0207 834 66 60 - Office

[www.fusionmng.com](http://www.fusionmng.com)

[cast@fusionmng.com](mailto:cast@fusionmng.com)

**FM** FUSION  
MANAGEMENT  
TALENT & MODEL MANAGEMENT AGENCY