

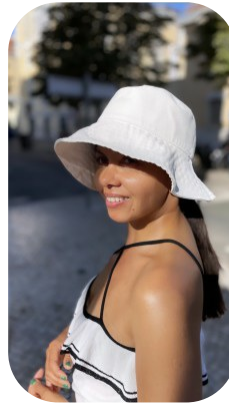
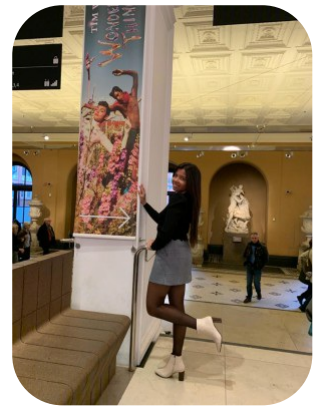
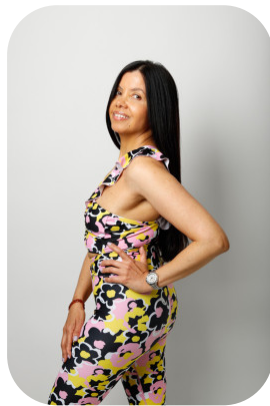


Ange Solo



Age: 41-50	Height: 5ft2inch	Eye Colour: Brown	Accent: French
Gender:F	Weight: 53kg	Waist: 26	Bust: 32
Location: London	Shoe Size: 4	Hips: 35	
Drives: No	Hair Color: Brunette		

Talents
 FITNESS MODELS, MATURE MODELS, EXTRAS,
 ATHLETES



Additional Talents:

BIKE - SWIM - ROLLERSKATE - SKATEBOARD - ICESKATE - COOK

SKI - 45 + YEARS

[Ange Solo Profile](#)

All Rights Reserved by [Fusion Management](#) © 2018

FOR ANY INQUIRIES PLEASE CONTACT US

0207 834 66 60 - Office

www.fusionmng.com

cast@fusionmng.com

FM FUSION
MANAGEMENT
TALENT & MODEL MANAGEMENT AGENCY