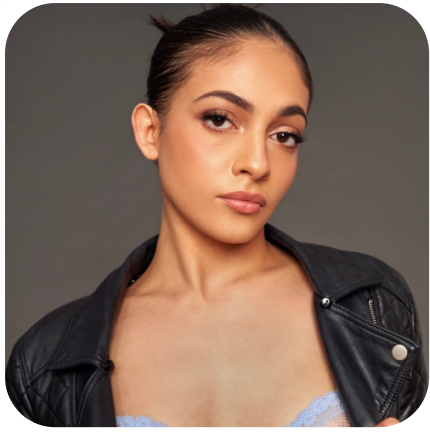




Anisha Shaw

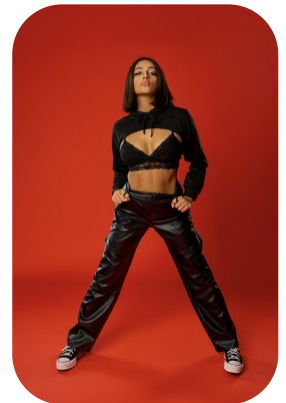
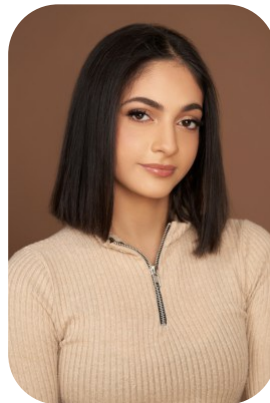
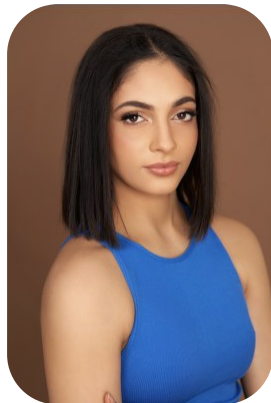
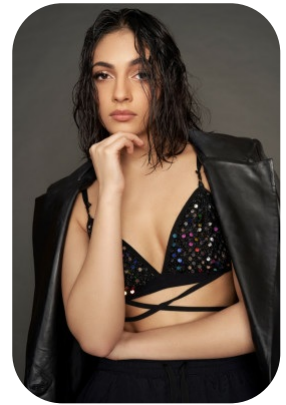
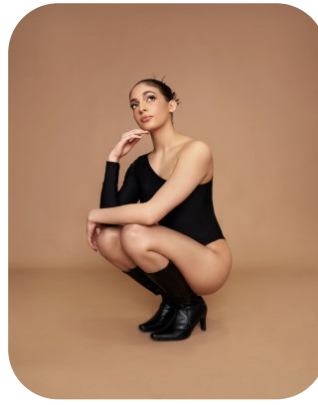
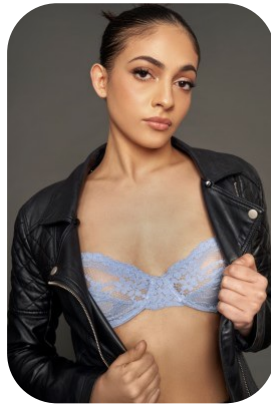


Credits: 5 Trainings: 1 Videos: 4

Age: 21-24	Height: 5ft7inch	Eye Colour: Brown	Accent: London
Gender:F	Weight: 53kg	Waist: 69cm	
Location: London	Shoe Size: 5	Bust: 87cm	
Drives: No	Hair Color: Black	Hips: 72cm	

Talents

COMMERCIAL MODELS, COMMERCIAL DANCERS, PROFESSIONAL ACTORS, YOUNG PERFORMERS, EXTRAS



Additional Talents:

SWIM BOX

Music & Dance

Skilled:

Alto, Ballad, Ballet, Choreography, Commercial Dance, Contact Improvisation, Contemporary Dance, Contemporary Singing, Dance (general), Dance Captain, Hip Hop Dance, Jazz Dancing, Jazz Singing, Locking, Mezzo-Soprano, Pop Singing, Rock Singing, Singing (general), Street Dance, Vogue Dance

Credits:

Years of Production	Production Name	Role
2023	Robinson Crusoe	Princess Moonflower (Female Lead)
2023	Carrie- The World According To Chris-MOVEIT	Featured ensemble soloist
2023	Carrie- FITDOG recording studio	Singer
2022	CATS	Munkastrap
2022	UDC Convention- Headliners	Contemporary Dancer

Trainings:

Performing Arts Stella Mann College of the Performance Arts

FOR ANY INQUIRIES PLEASE CONTACT US

0207 834 66 60 - Office

www.fusionmng.com

cast@fusionmng.com

**FM FUSION
MANAGEMENT**
TALENT & MODEL MANAGEMENT AGENCY