

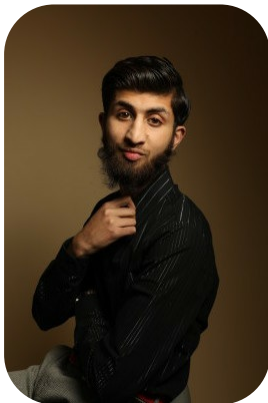
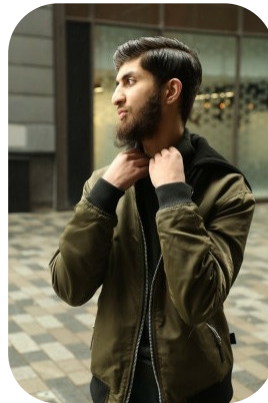


# Anis Hussain



Age: 21-24	Height: 5ft10inch	Eye Colour: Brown	Accent: Northern
Gender:M	Weight: 56kg	Waist: 28-29es	
Location: Britain North	Shoe Size: 9	Bust: 31-32es	
Drives: No	Hair Color: Brunette	Hips: 37	

Talents  
COMMERCIAL MODELS, EXTRAS



Additional Talents:  
BIKE GYM

FOR ANY INQUIRIES PLEASE CONTACT US

0207 834 66 60 - Office

[www.fusionmng.com](http://www.fusionmng.com)

[cast@fusionmng.com](mailto:cast@fusionmng.com)

**FM** FUSION  
MANAGEMENT  
TALENT & MODEL MANAGEMENT AGENCY