



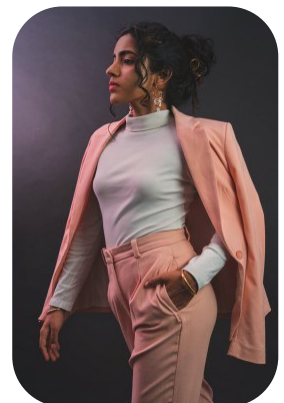
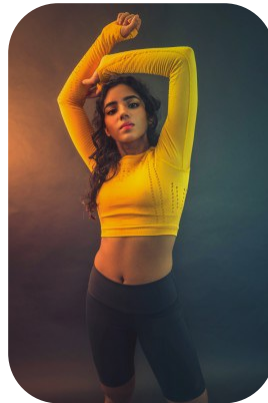
Ashwini R



Trainings: 1

Age: 25-30	Height: 5ft0inch	Eye Colour: Brown	Accent: South Asian
Gender:F	Weight: 53kg	Waist: 68	
Location: London	Shoe Size: 4	Bust: 85	
Drives: Yes	Hair Color: Black	Hips: 94	

Talents
COMMERCIAL MODELS



Additional Talents:
SWIM BIKE SURF

Trainings:

Miss World Malaysia

Malaysia

FOR ANY INQUIRIES PLEASE CONTACT US

0207 834 66 60 - Office

www.fusionmng.com

cast@fusionmng.com

FM FUSION
MANAGEMENT
TALENT & MODEL MANAGEMENT AGENCY