



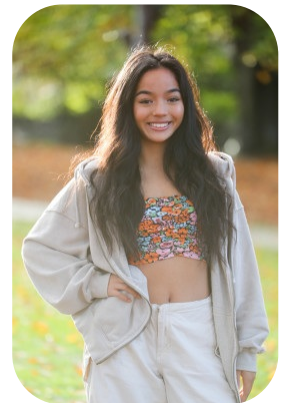
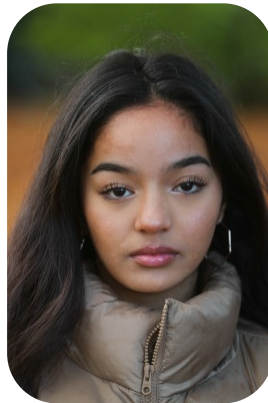
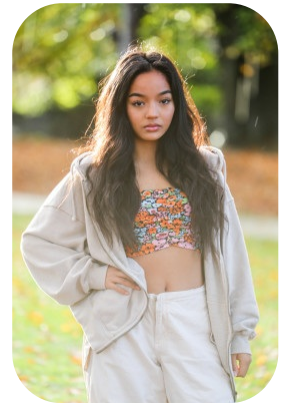
Bayli Gifford



Age: 16-20	Height: 5ft1inch	Eye Colour: Black	Accent: London
Gender:F	Weight: 48kg	Waist: 25es	Bust: 30es
Location: London	Shoe Size: 5	Hips: 37es	
Drives: No	Hair Color: Black		

Talents

COMMERCIAL MODELS, TEEN MODELS



Additional Talents:

SWIM - BIKE - SKI - RUN - HORSERIDE

FOR ANY INQUIRIES PLEASE CONTACT US

0207 834 66 60 - Office

www.fusionmng.com

cast@fusionmng.com

