



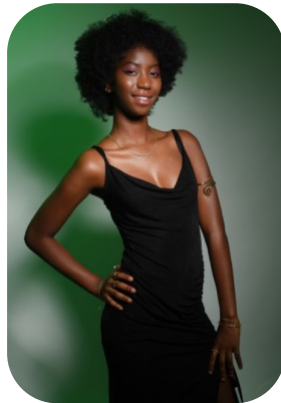
Cecilia Akinnubi



Age: 16-20	Height: 5ft7inch	Eye Colour: Brown	Accent: London
Gender:F	Weight: 55kg	Waist: 30	Bust: 29
Location: London	Shoe Size: 6.5	Hips: 39	
Drives: No	Hair Color: Black		

Talents

COMMERCIAL MODELS, TEEN MODELS, EXTRAS



Additional Talents:

POETRY - BIKE - SING - DRUMS - STEEL PANS - HAIR DRESSING / STYLING

FOR ANY INQUIRIES PLEASE CONTACT US

0207 834 66 60 - Office

www.fusionmng.com

cast@fusionmng.com

