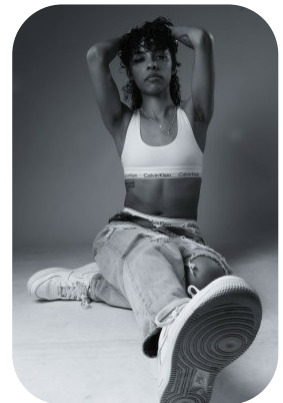
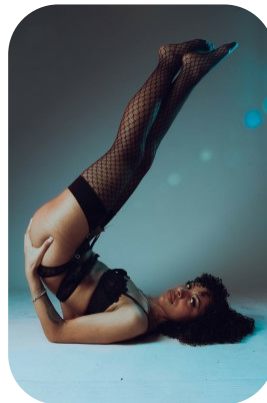
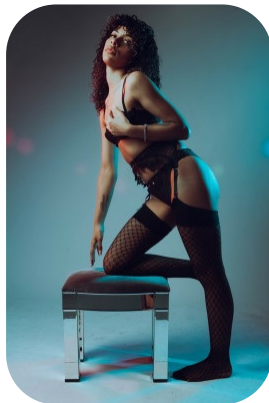
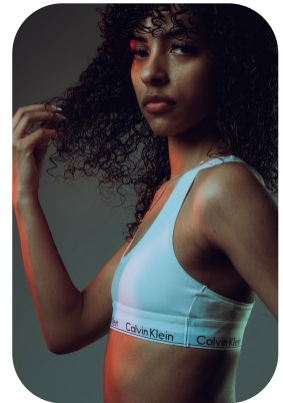
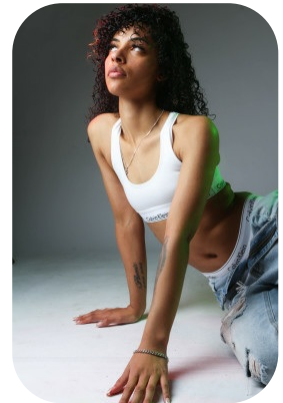
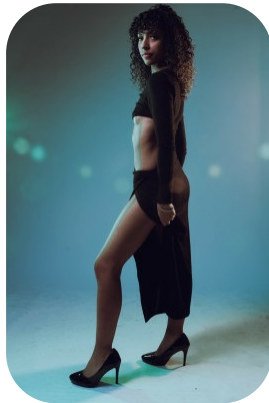
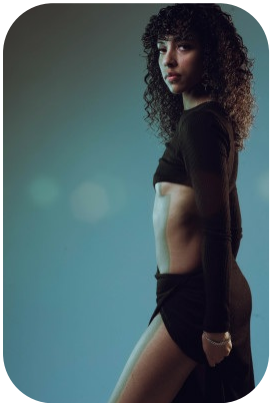


# Chalice



Age: 25-30	Height: 5ft5inch	Eye Colour: Green	Accent: London
Gender:F	Weight: 50kg	Waist: 27	Bust: 30
Location: London	Shoe Size: 6	Hips: 37	
Drives: No	Hair Color: Brunette		

Talents  
COMMERCIAL MODELS



Additional Talents:  
GYM STREET DANCE

FOR ANY INQUIRIES PLEASE CONTACT US

0207 834 66 60 - Office

[www.fusionmng.com](http://www.fusionmng.com)

[cast@fusionmng.com](mailto:cast@fusionmng.com)

