



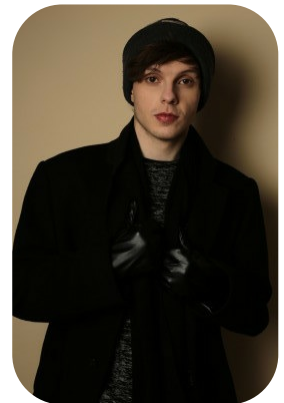
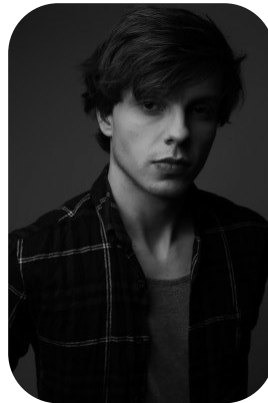
# Charlie George



Age: 21-24	Height: 6ft1inch	Eye Colour: Brown	Accent: London
Gender:M	Weight: 70kg	Waist: 30	Bust: 35
Location: London	Shoe Size: 10	Hips: 32	
Drives: No	Hair Color: Brunette		

## Talents

COMMERCIAL MODELS, EXTRAS, SPECIALITY



### Additional Talents:

BIKE - SWIM - GYM - FITNESS - BOXING

KARATE - MARTIAL ARTS - KENDO - FENCING

FOR ANY INQUIRIES PLEASE CONTACT US

0207 834 66 60 - Office

[www.fusionmng.com](http://www.fusionmng.com)

[cast@fusionmng.com](mailto:cast@fusionmng.com)

