



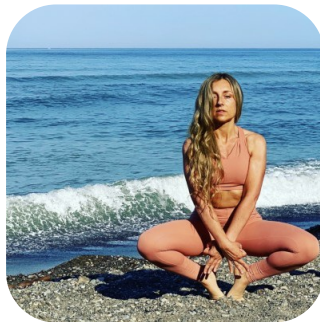
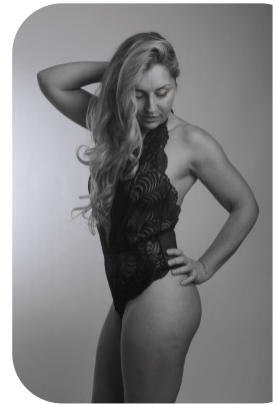
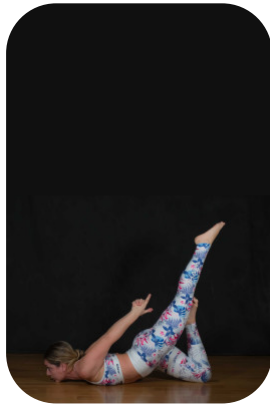
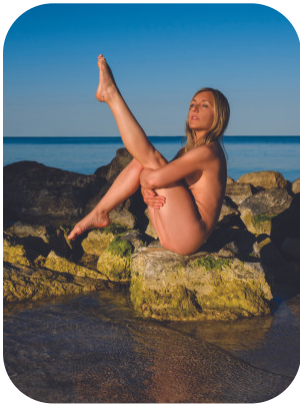
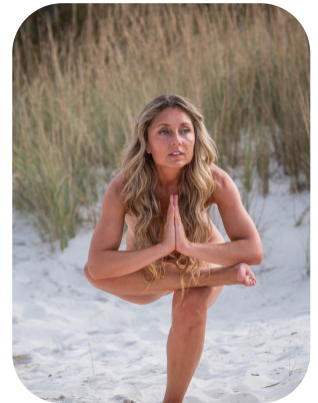
Doria Gani



Videos: 1

Age: 41-50	Height: 5ft2inch	Eye Colour: Blue	Accent: Italian
Gender:F	Weight: 57kg	Waist: 29	
Location: London	Shoe Size: 5	Bust: 35.5	
Drives: Yes	Hair Color: Blonde	Hips: 38	

Talents
MATURE MODELS, ATHLETES



Additional Talents:
SWIM BIKE YOGA PRO
PILATES VOLLEYBALL

FOR ANY INQUIRIES PLEASE CONTACT US

0207 834 66 60 - Office

www.fusionmng.com

cast@fusionmng.com

FM FUSION
MANAGEMENT
TALENT & MODEL MANAGEMENT AGENCY