

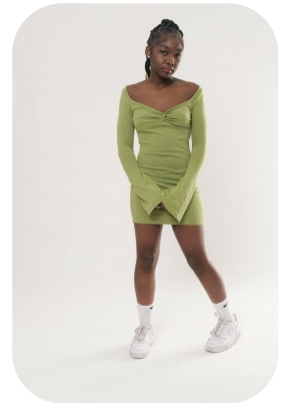


El-Shardae



| | | | |
|------------------|-------------------|-------------------|----------------|
| Age: 16-20 | Height: 5ft0inch | Eye Colour: Black | Accent: London |
| Gender:F | Weight: 53kg | Waist: 27 | |
| Location: London | Shoe Size: 5.5 | Bust: 32 | |
| Drives: No | Hair Color: Black | Hips: 30 | |

Talents
TEEN MODELS, EXTRAS



Additional Talents:

BIKE

ATHLETICS - TRACK -8 MONTHS

TIK TOK

SING

FOR ANY INQUIRIES PLEASE CONTACT US

0207 834 66 60 - Office

www.fusionmng.com

cast@fusionmng.com

FM FUSION
MANAGEMENT
TALENT & MODEL MANAGEMENT AGENCY