



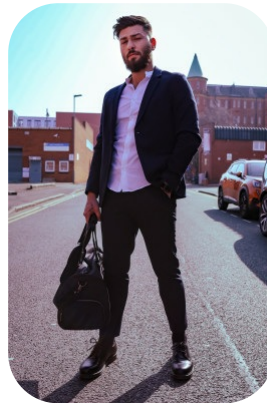
Emanuele Diana



Age: 25-30	Height: 6ft0inch	Eye Colour: Brown	Accent: Italian
Gender: M	Weight: 86kg	Waist: 34	Bust: 41
Location: London	Shoe Size: 11	Hips: 36	
Drives: Yes	Hair Color: Brunette		

Talents

COMMERCIAL MODELS, EXTRAS



Additional Talents:

Bike - Swim - Motorbike - Moped - Chef (13 years)

FOR ANY INQUIRIES PLEASE CONTACT US

0207 834 66 60 - Office

www.fusionmng.com

cast@fusionmng.com

