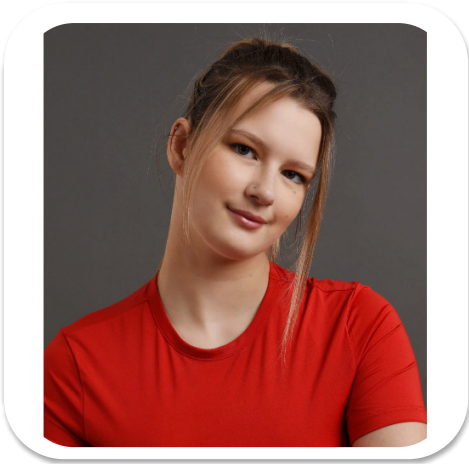


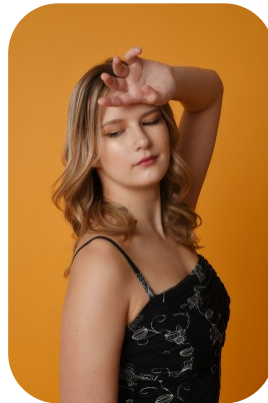
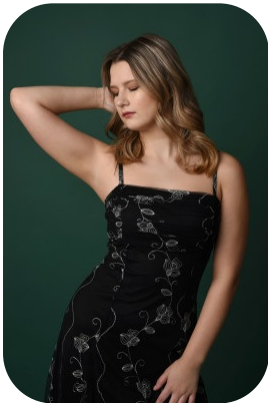
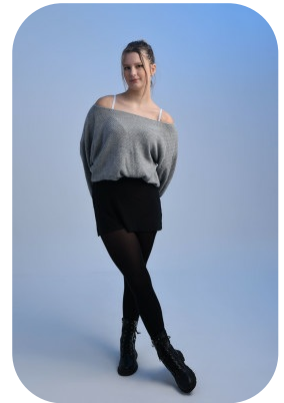
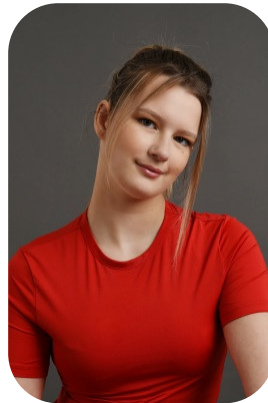


Emili Bollin



Age: 16-20	Height: 5ft8inch	Eye Colour: Blue	Accent: London
Gender:F	Weight: 66kg	Waist: 27	Bust: 34
Location: Britain North	Shoe Size: 5.5	Hips: 36	
Drives: No	Hair Color: Blonde		

Talents
COMMERCIAL MODELS, TEEN MODELS, EXTRAS



Additional Talents:

BIKE - SWIM

DANCE: STREET DANCE AND CONTEMPORARY

ICE-SKATING

DRAWING

FOR ANY INQUIRIES PLEASE CONTACT US

0207 834 66 60 - Office

www.fusionmng.com

[Emili Bollin Profile](#)

All Rights Reserved by [Fusion Management](#) © 2018

