

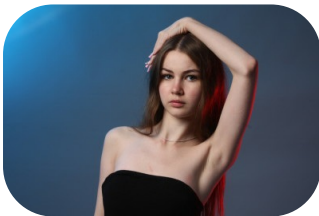
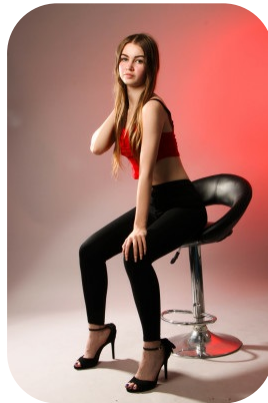
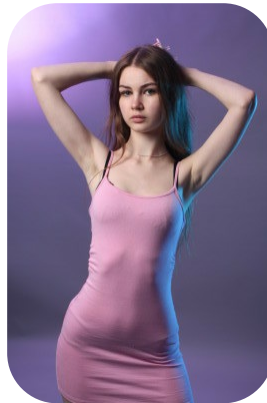


# Emily-Mae Ferris



Age: 16-20	Height: 5ft5inch	Eye Colour: Green	Accent: London
Gender:F	Weight: 49kg	Waist: 23es	Bust: 30es
Location: London	Shoe Size: 5	Hips: 30es	
Drives: No	Hair Color: Brunette		

Talents  
TEEN MODELS, EXTRAS



Additional Talents:  
DANCE - STREET - 1 YEAR

FOR ANY INQUIRIES PLEASE CONTACT US

0207 834 66 60 - Office

[www.fusionmng.com](http://www.fusionmng.com)

[cast@fusionmng.com](mailto:cast@fusionmng.com)

