

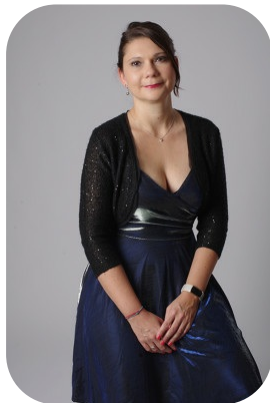


# Emily Sornay



Age: 31-40	Height: 4ft5inch	Eye Colour: Brown	Accent: French
Gender:F	Weight: 59kg	Waist: 26	Bust: 33
Location: London	Shoe Size: 5	Hips: 40	
Drives: Yes	Hair Color: Brunette		

Talents  
COMMERCIAL MODELS



Additional Talents:

SWIM BIKE LATIN DANCE JIVE YOGA GYM FITNESS

FOR ANY INQUIRIES PLEASE CONTACT US

0207 834 66 60 - Office

[www.fusionmng.com](http://www.fusionmng.com)

[cast@fusionmng.com](mailto:cast@fusionmng.com)

