



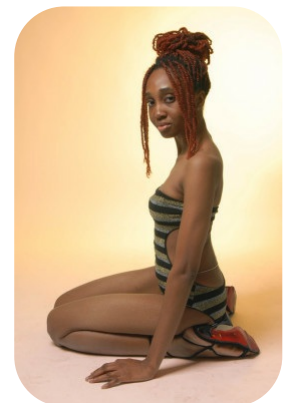
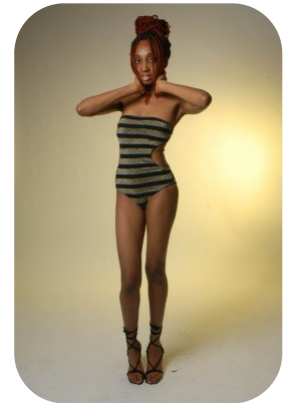
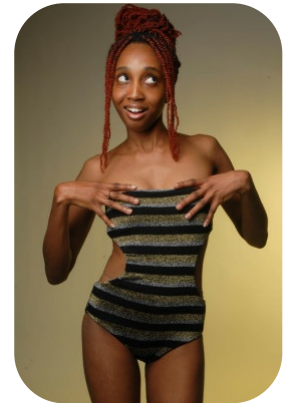
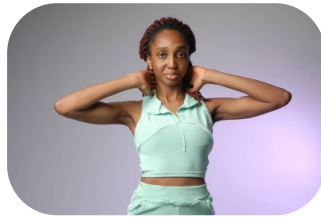
# Emuobonuvie Omene



Age: 21-24	Height: 5ft8inch	Eye Colour: Black	Accent: African
Gender:F	Weight: 55kg	Waist: 28	
Location: London	Shoe Size: 8.UK	Bust: 33	
Drives: Yes	Hair Color: Black	Hips: 38	

## Talents

COMMERCIAL MODELS, HIGH FASHION, EXTRAS



Additional Talents:

DANCE

FOR ANY INQUIRIES PLEASE CONTACT US

0207 834 66 60 - Office

[www.fusionmng.com](http://www.fusionmng.com)

[cast@fusionmng.com](mailto:cast@fusionmng.com)

