

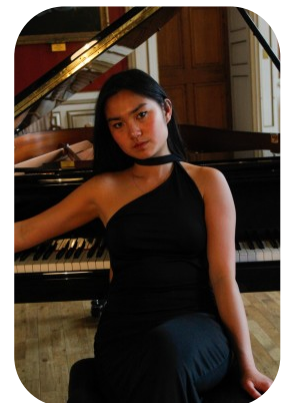
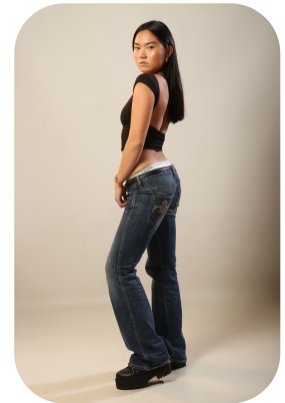
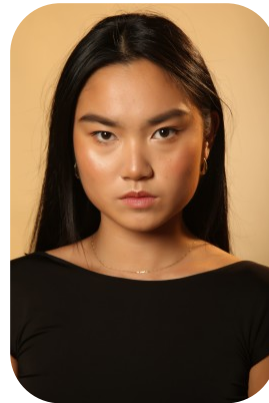


# Erica Song



Age: 16-20	Height: 5ft6inch	Eye Colour: Brown	Accent: London
Gender: F	Weight: 55kg	Waist: 26	Bust: 32
Location: London	Shoe Size: 5.5	Hips: 37	
Drives: No	Hair Color: Black		

Talents  
COMMERCIAL MODELS, NEW FACES, EXTRAS



Additional Talents:  
BIKE - SWIM  
GYM - FITNESS

DANCE

CIRCUS TRAINING:

AERIAL HOOP, POLE DANCE, UNICYCLE

DIPLOMA IN PIANO

---

FOR ANY INQUIRIES PLEASE CONTACT US

0207 834 66 60 - Office

[www.fusionmng.com](http://www.fusionmng.com)

[cast@fusionmng.com](mailto:cast@fusionmng.com)

**FM** FUSION  
MANAGEMENT  
TALENT & MODEL MANAGEMENT AGENCY