

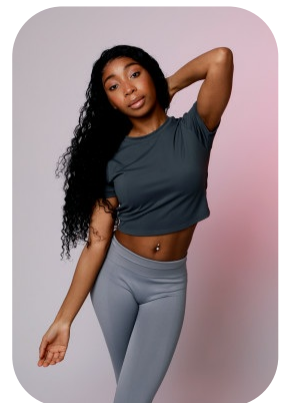
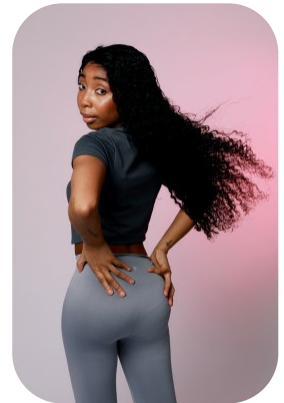
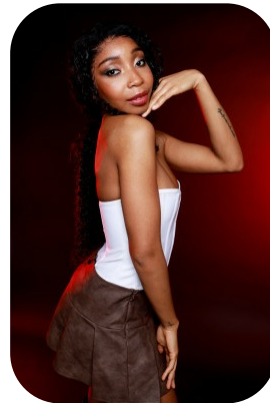
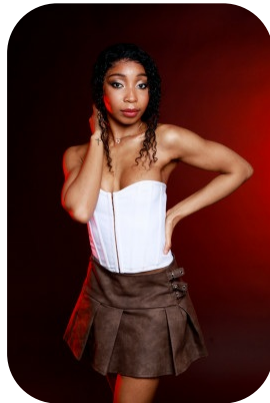
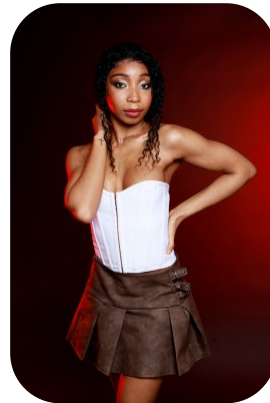


Esther Abolade



Age: 25-30	Height: 5ft5inch	Eye Colour: Black	Accent: London
Gender:F	Weight: 55kg	Waist: 28	Bust: 32
Location: London	Shoe Size: 5.5	Hips: 30	
Drives: Yes	Hair Color: Black		

Talents
COMMERCIAL MODELS



Additional Talents:
BIKE NETBALL

FOR ANY INQUIRIES PLEASE CONTACT US

0207 834 66 60 - Office

www.fusionmng.com

cast@fusionmng.com

