

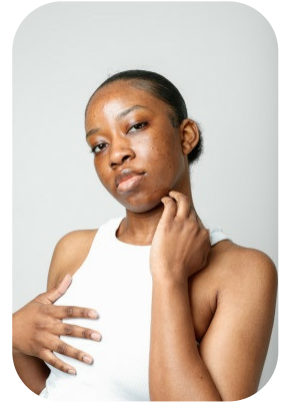
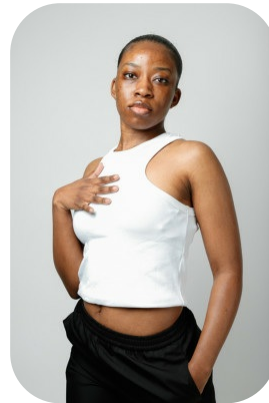


Esther C



Age: 21-24	Height: 5ft5inch	Eye Colour: Brown	Accent: London
Gender:F	Weight: 56kg	Waist: 27	Bust: 32
Location: London	Shoe Size: 5	Hips: 38	
Drives: No	Hair Color: Black		

Talents
COMMERCIAL MODELS



Additional Talents:
BIKE TENNIS RUN

FOR ANY INQUIRIES PLEASE CONTACT US

0207 834 66 60 - Office

www.fusionmng.com

cast@fusionmng.com

FM FUSION
MANAGEMENT
TALENT & MODEL MANAGEMENT AGENCY