

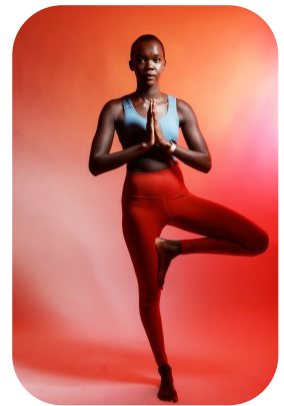
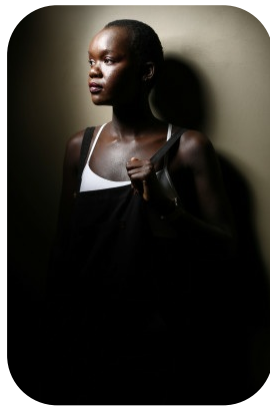


Faith Rotich



Age: 25-30	Height: 5ft9inch	Eye Colour: Brown	Accent: London
Gender:F	Weight: 59kg	Waist: 27"	Bust: 32"
Location: London	Shoe Size: 6.5	Hips: 38.5"	
Drives: No	Hair Color: Black		

Talents
COMMERCIAL MODELS, COMMERCIAL DANCERS,
EXTRAS



Additional Talents:
BIKE - SWIM - SKI
BASKETBALL
YOGA
DANCE - TANGO - 4 YEARS

FOR ANY INQUIRIES PLEASE CONTACT US

0207 834 66 60 - Office

