



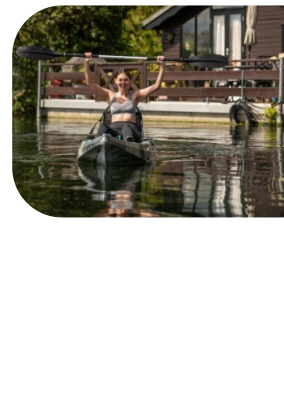
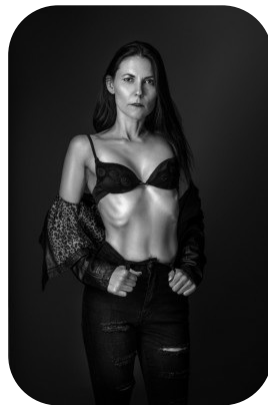
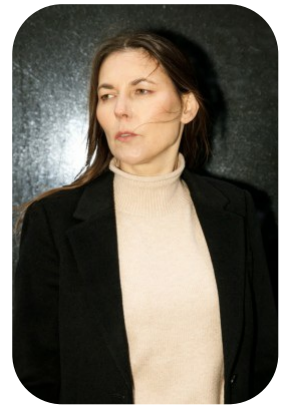
Gabina I



Age: 41-50	Height: 5ft5inch	Eye Colour: Hazel	Accent: London
Gender:F	Shoe Size: 5.5	Waist: 25	Bust: 32
Location: London	Hair Color: Brunette	(30C)	Hips: 36

Talents

COMMERCIAL MODELS, MATURE MODELS, NEW FACES, EXTRAS



Additional Talents:

YOGA - SWIM - ICESKATE - SKI - PADDLEBOARD - KAYAK - ROCK CLIMBING - BADMINTON - KNITTING & CROCHET - BIKE

FOR ANY INQUIRIES PLEASE CONTACT US

0207 834 66 60 - Office

www.fusionmng.com

cast@fusionmng.com

FM FUSION
MANAGEMENT
TALENT & MODEL MANAGEMENT AGENCY