

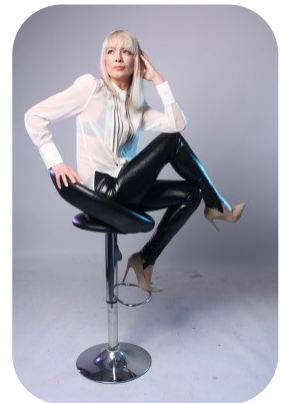


# Gabriela Cretu



Age: 31-40	Height: 5ft6inch	Eye Colour: Brown	Accent: London
Gender:F	Weight: 54kg	Waist: 26	Bust: 35
Location: London	Shoe Size: 5	Hips: 35	
Drives: Yes	Hair Color: Blonde		

Talents  
FITNESS MODELS, MATURE MODELS, EXTRAS



Additional Talents:  
BIKE - SWIM - HORSERIDE  
ATHLETICS, HANDBALL, BASKETBALL

GYM FITNESS

DANCE - COMMERCIAL

SING

---

FOR ANY INQUIRIES PLEASE CONTACT US

0207 834 66 60 - Office

[www.fusionmng.com](http://www.fusionmng.com)

[cast@fusionmng.com](mailto:cast@fusionmng.com)

**FM** FUSION  
MANAGEMENT  
TALENT & MODEL MANAGEMENT AGENCY