

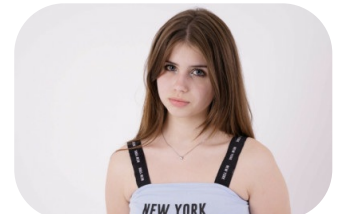


# Gabriele Salkute



Age: 16-20	Height: 5ft6inch	Eye Colour: Blue	Accent: London
Gender:F	Weight: 55kg	Bust: 30	
Location: London	Shoe Size: 6	Hips: 31es	
Drives: No	Hair Color: Brunette		

Talents  
COMMERCIAL MODELS, TEEN MODELS, EXTRAS



Additional Talents:  
PIANO  
JAZZ

BIKE

SWIM

ROLLERSKATE

ICESKATE

---

FOR ANY INQUIRIES PLEASE CONTACT US

0207 834 66 60 - Office

[www.fusionmng.com](http://www.fusionmng.com)

[cast@fusionmng.com](mailto:cast@fusionmng.com)

**FM** FUSION  
MANAGEMENT  
TALENT & MODEL MANAGEMENT AGENCY