

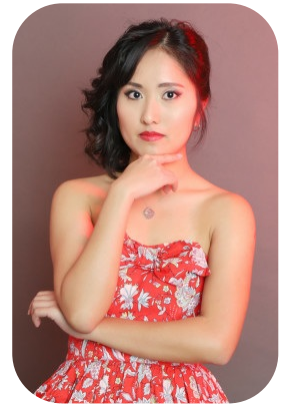
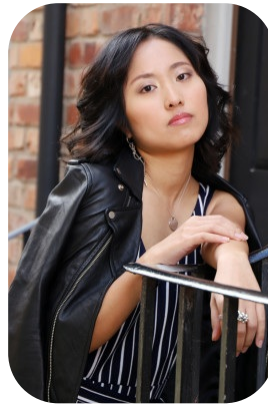


Gabriella Choy



Age: 25-30	Height: 5ft3inch	Eye Colour: Black	Accent: London
Gender:F	Weight: 46kg	Waist: 25	Bust: 29.5
Location: Britain North	Shoe Size: 5	Hips: 32	
Drives: Yes	Hair Color: Black		

Talents
COMMERCIAL MODELS



Additional Talents:
PIANO
ICESKATE

OPEN WATER SCUBA DIVING

BADMINTON

SWIM

FOR ANY INQUIRIES PLEASE CONTACT US

0207 834 66 60 - Office

www.fusionmng.com

cast@fusionmng.com

FM FUSION
MANAGEMENT
TALENT & MODEL MANAGEMENT AGENCY