

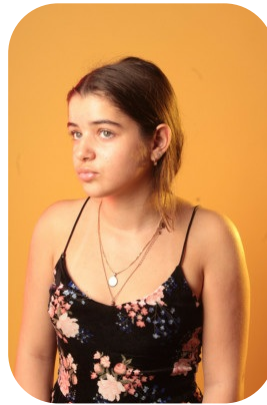
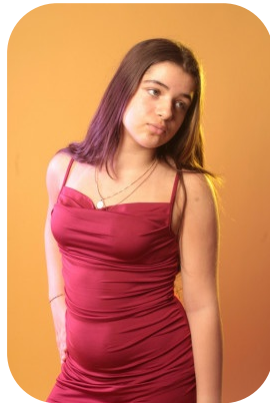
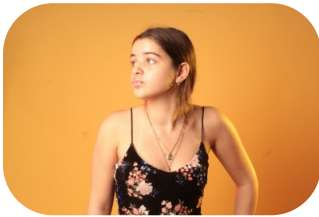


# Gabriella Constantin



Age: 11-15	Height: 5ft2inch	Eye Colour: Green	Accent: London
Gender:F	Weight: 50kg	Waist: 67cm	
Location: London	Shoe Size: 5	Bust: 72cm	
Drives: No	Hair Color: Brunette	Hips: 85	

Talents  
TEEN MODELS, EXTRAS



Additional Talents:  
BIKE

FOR ANY INQUIRIES PLEASE CONTACT US

0207 834 66 60 - Office

[www.fusionmng.com](http://www.fusionmng.com)

[cast@fusionmng.com](mailto:cast@fusionmng.com)

**FM** FUSION  
MANAGEMENT  
TALENT & MODEL MANAGEMENT AGENCY