

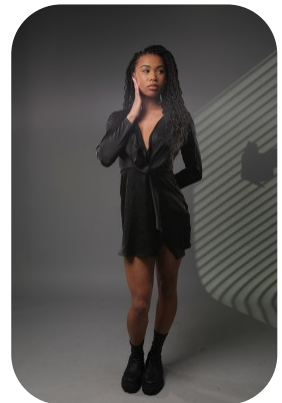
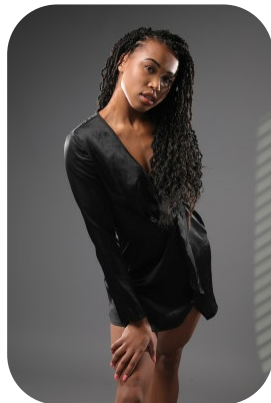


Gabrielle Connell



Age: 21-24	Height: 5ft7inch	Eye Colour: Brown	Accent: London
Gender:F	Weight: 63kg	Waist: 29	Bust: 34
Location: London	Shoe Size: 6.5	Hips: 36	
Drives: Yes	Hair Color: Black		

Talents
COMMERCIAL MODELS, EXTRAS



Additional Talents:
BIKE - SWIM
GYM FITNESS

FOR ANY INQUIRIES PLEASE CONTACT US

0207 834 66 60 - Office

www.fusionmng.com

cast@fusionmng.com

FM FUSION
MANAGEMENT
TALENT & MODEL MANAGEMENT AGENCY