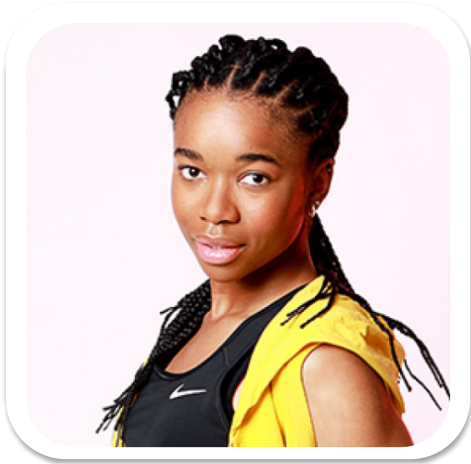


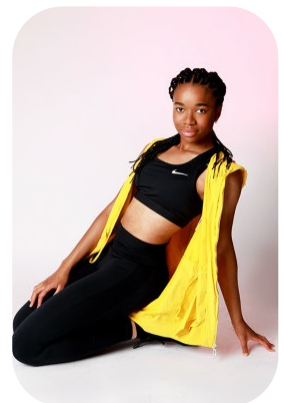
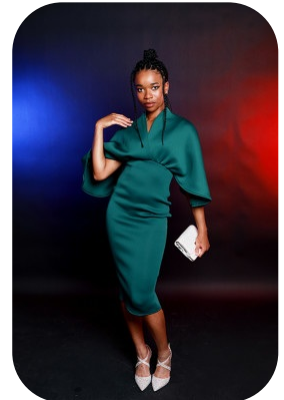
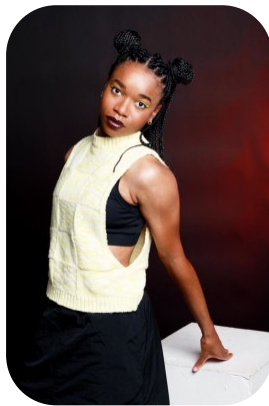


Gabrielle D



Age: 16-20	Height: 5ft6inch	Eye Colour: Brown	Accent: London
Gender:F	Weight: 60kg	Waist: 26	Bust: 34
Location: London	Shoe Size: 7.5	Hips: 31.5	
Drives: No	Hair Color: Other/Extreme		

Talents
COMMERCIAL MODELS, EXTRAS, ATHLETES, MUSICIANS



Additional Talents:

BIKE - SWIM - ROLLERSKATE - SKATEBOARD - HORSERIDE - SKI - CLIMB

PRO FOOTBALL (COMPETITIVE) - CHELSEA ACADEMY
BASKETBALL, TENNIS, ATHLETICS, NETBALL
GUITAR - 8 YEARS
BOXING
SING

FOR ANY INQUIRIES PLEASE CONTACT US

0207 834 66 60 - Office

www.fusionmng.com

cast@fusionmng.com

FM FUSION
MANAGEMENT
TALENT & MODEL MANAGEMENT AGENCY