

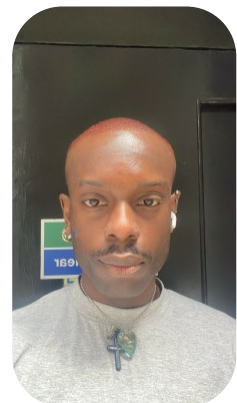


GiGi Oputa



Age: 25-30	Height: 6ft0inch	Eye Colour: Brown	Accent: London
Gender:M	Weight: 80kg	Waist: 32	Bust: 38
Location: London	Shoe Size: 12	Hair Color: Black	
Drives: No			

Talents
COMMERCIAL MODELS, COMMERCIAL DANCERS,
EXTRAS



Additional Talents:
SWIM - CLIMB

FOR ANY INQUIRIES PLEASE CONTACT US

0207 834 66 60 - Office

www.fusionmng.com

cast@fusionmng.com

