

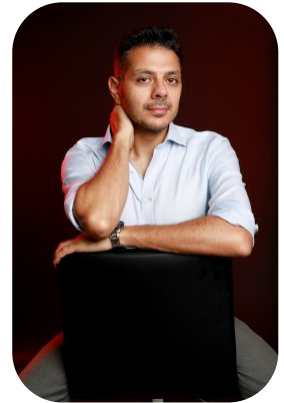
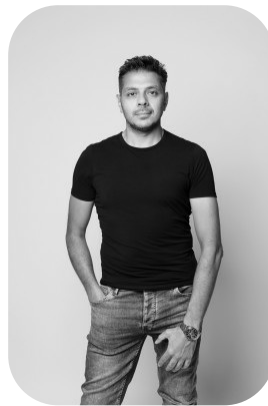


Hani Risheq



Age: 41-50	Height: 5ft11inch	Eye Colour: Hazel	Accent: London
Gender:M	Weight: 79kg	Waist: 37.5es	
Location: London	Shoe Size: 10.5	Bust: 40es	
Drives: Yes	Hair Color: Black	Hips: 22es	

Talents
COMMERCIAL DANCERS, MATURE MODELS,
EXTRAS



Additional Talents:
BIKE - SWIM

FOR ANY INQUIRIES PLEASE CONTACT US

0207 834 66 60 - Office

www.fusionmng.com

cast@fusionmng.com

