

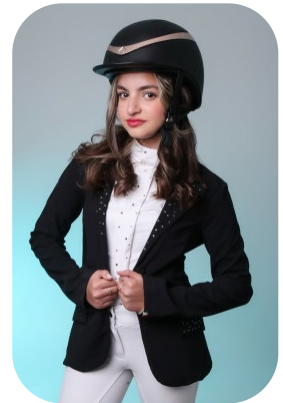


# Isi Brown



Age: 11-15	Height: 5ft3inch	Eye Colour: Brown	Accent: London
Gender:F	Weight: 47kg	Waist: 26ches	
Location: London	Shoe Size: 6	Bust: tba	
Drives: No	Hair Color: Brunette	Hips: 33ches	

Talents  
TEEN MODELS, EXTRAS



Additional Talents:

BIKE - SWIM - CLIMB

HORSERIDE - 3 YEARS - SHOW JUMPING

FOR ANY INQUIRIES PLEASE CONTACT US

0207 834 66 60 - Office

[www.fusionmng.com](http://www.fusionmng.com)

[cast@fusionmng.com](mailto:cast@fusionmng.com)

**FM** FUSION  
MANAGEMENT  
TALENT & MODEL MANAGEMENT AGENCY