

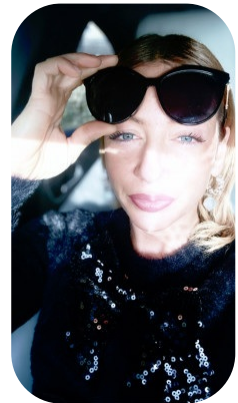
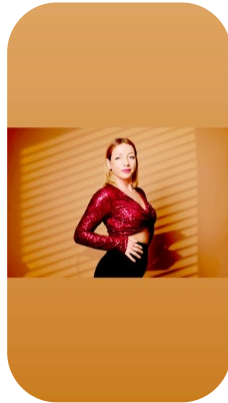
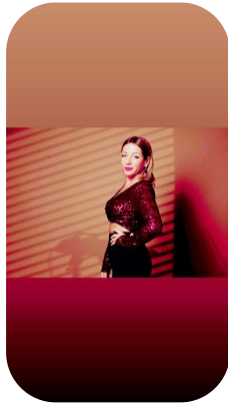
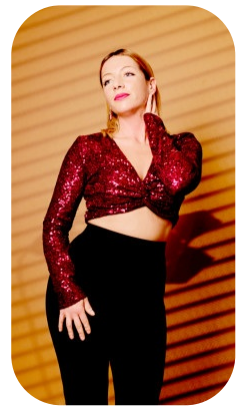
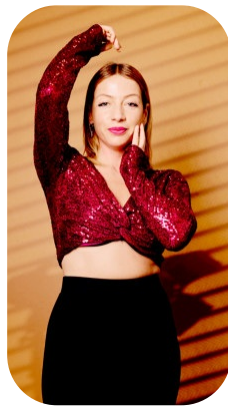
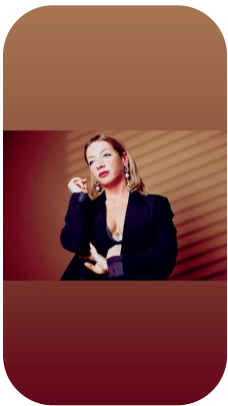


Ivelina Dimitrova



Age: 31-40	Height: 5ft2inch	Eye Colour: Blue	Accent: London
Gender:F	Weight: 54kg	Waist: 29 Inches	
Location: London	Shoe Size: 4	Bust: 34 Inches	
Drives: Yes	Hair Color: Blonde		

Talents
COMMERCIAL MODELS, COMMERCIAL DANCERS,
EXTRAS



Additional Talents:
BIKE

GYM FITNESS

DANCE - COMMERCIAL, LATIN, HIP HOP

FOR ANY INQUIRIES PLEASE CONTACT US

0207 834 66 60 - Office

www.fusionmng.com

cast@fusionmng.com

FM FUSION
MANAGEMENT
TALENT & MODEL MANAGEMENT AGENCY