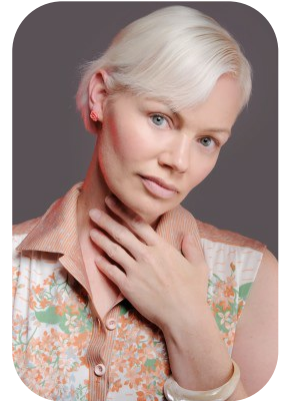
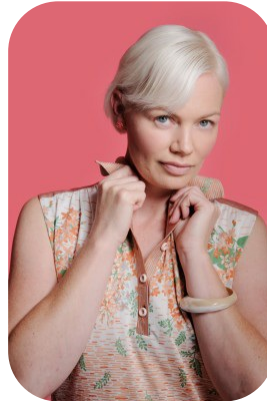


Ivette G



Age: 41-50	Height: 5ft4inch	Eye Colour: Blue	Accent: Other
Gender:F	Weight: 58kg	Waist: 29es	
Location: Britain North	Shoe Size: 6.5	Bust: 34.5es	
Drives: Yes	Hair Color: Blonde	Hips: 35es	

Talents
COMMERCIAL MODELS, MATURE MODELS



Additional Talents:
SWIM BIKE
BAKING

FOR ANY INQUIRIES PLEASE CONTACT US

0207 834 66 60 - Office

www.fusionmng.com

cast@fusionmng.com

FM FUSION
MANAGEMENT
TALENT & MODEL MANAGEMENT AGENCY