

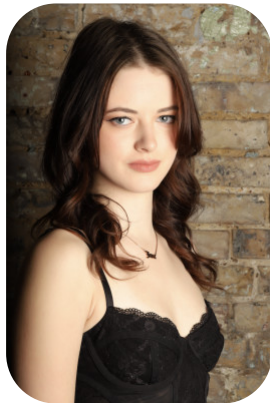
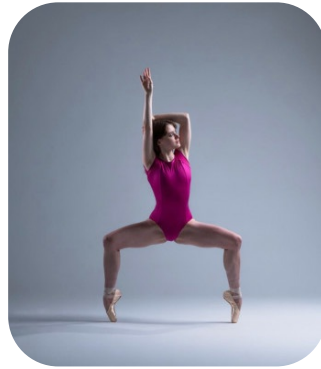
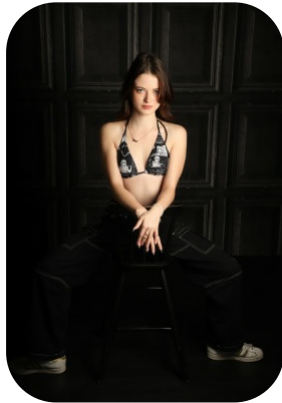


Jana Irvine



Age: 16-20	Height: 5ft3inch	Eye Colour: Blue	Accent: London
Gender:F	Weight: 49kg	Waist: 23	Bust: 32
Location: London	Shoe Size: 5.5	Hips: 33	
Drives: No	Hair Color: Brunette		

Talents
COMMERCIAL MODELS, COMMERCIAL DANCERS,
EXTRAS



Additional Talents:
BIKE - SWIM - ROLLERSKATE - HORSERIDE

DANCE - BALLET, TAP, COMMERCIAL, MODERN, CONTEMPORARY - 16 YEARS

BADMINTON

PIANO

FOR ANY INQUIRIES PLEASE CONTACT US

0207 834 66 60 - Office

www.fusionmng.com

cast@fusionmng.com

FM FUSION
MANAGEMENT
TALENT & MODEL MANAGEMENT AGENCY