

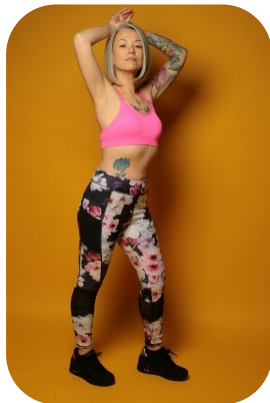
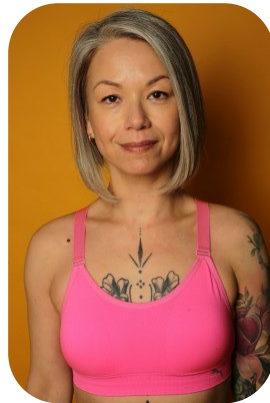


Jennifer Lau



Age: 41-50	Height: 5ft5inch	Eye Colour: Brown	Accent: London
Gender:F	Weight: 62kg	Waist: 28es	Bust: 34A
Location: London	Shoe Size: 6	Hips: 39es	
Drives: Yes	Hair Color: Other/Extreme		

Talents
COMMERCIAL MODELS, EXTRAS



Additional Talents:
BIKE - SWIM - ICESKATE - GYM FITNESS

FOR ANY INQUIRIES PLEASE CONTACT US

0207 834 66 60 - Office

www.fusionmng.com

cast@fusionmng.com

