

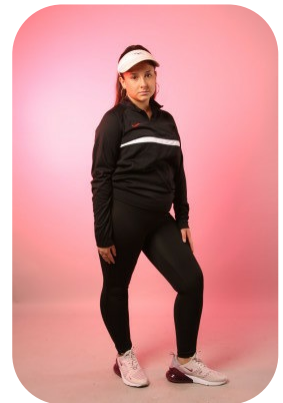
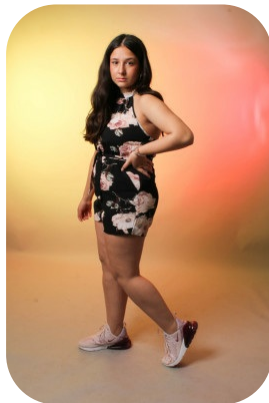
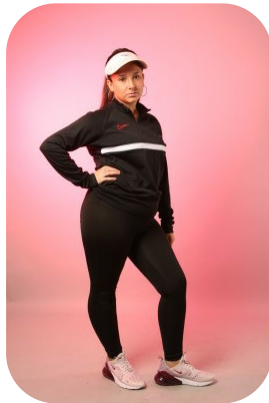


Jess Pharo



Age: 16-20	Height: 5ft4inch	Eye Colour: Brown	Accent: London
Gender:F	Weight: 76kg	Waist: 33	Bust: 38
Location: London	Shoe Size: 7	Hips: 40	
Drives: No	Hair Color: Brunette		

Talents
COMMERCIAL MODELS, EXTRAS



Additional Talents:

BIKE

FOR ANY INQUIRIES PLEASE CONTACT US

0207 834 66 60 - Office

www.fusionmng.com

cast@fusionmng.com

