

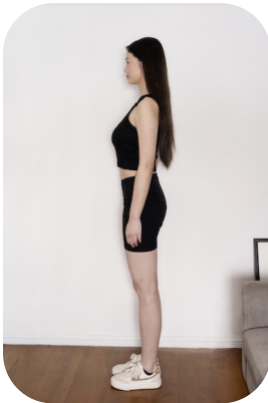
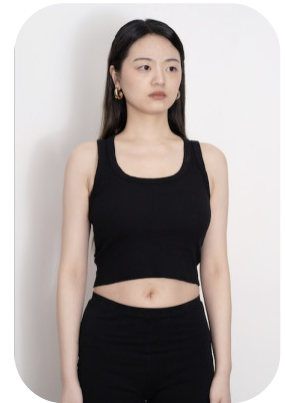
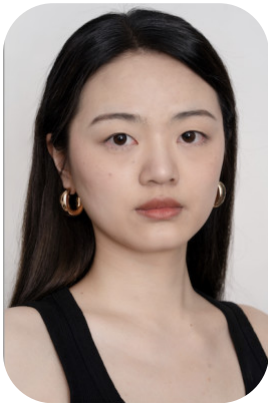


# Jie Min



Age: 25-30	Height: 5ft10inch	Eye Colour: Brown	Accent: East Asian
Gender:F	Weight: 59kg	Waist: 28	
Location: London	Shoe Size: 6	Bust: 33	
Drives: No	Hair Color: Blonde	Hips: 35	

Talents  
COMMERCIAL MODELS, EXTRAS



Additional Talents:  
SWIM BIKE RUN BADMINTON  
JAZZ

FOR ANY INQUIRIES PLEASE CONTACT US

0207 834 66 60 - Office

[www.fusionmng.com](http://www.fusionmng.com)  
[cast@fusionmng.com](mailto:cast@fusionmng.com)

