

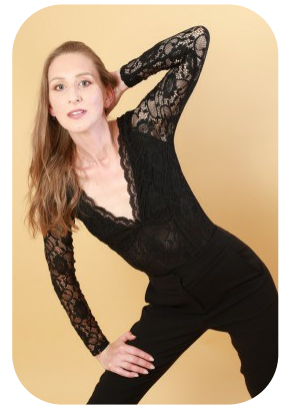
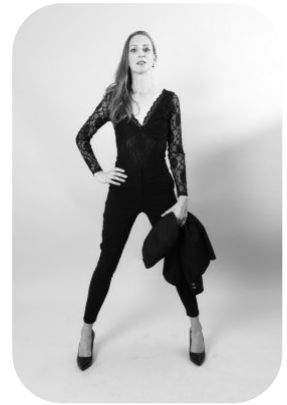


# Jola C



Age: 31-40	Height: 5ft6inch	Eye Colour: Blue	Accent: East Euro
Gender:F	Weight: 48kg	Waist: 25	Bust: 30
Location: London	Shoe Size: 6	Hips: 32	
Drives: Yes	Hair Color: Blonde		

Talents  
COMMERCIAL MODELS, EXTRAS



Additional Talents:

SWIM

BIKE

GYM

SALSA

---

FOR ANY INQUIRIES PLEASE CONTACT US

0207 834 66 60 - Office

[www.fusionmng.com](http://www.fusionmng.com)

[cast@fusionmng.com](mailto:cast@fusionmng.com)

**FM** FUSION  
MANAGEMENT  
TALENT & MODEL MANAGEMENT AGENCY