



Katy Heffernan-Smith

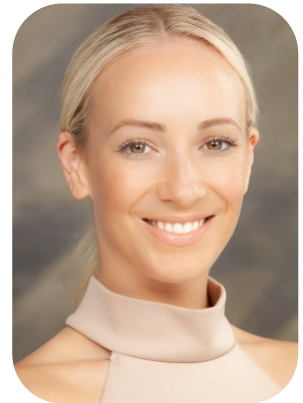
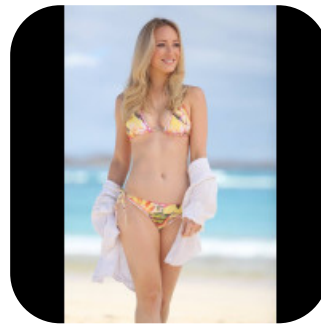
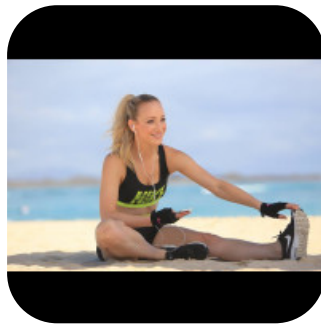
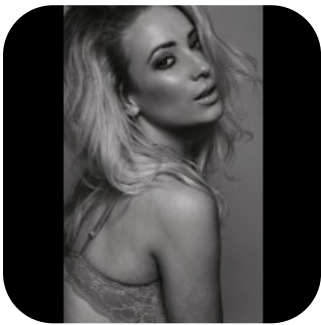


Trainings: 1

Age: 31-40	Height: 5ft3inch	Eye Colour: Hazel	Accent: London
Gender:F	Weight: 44kg	Waist: 26	Bust: 30dd
Location: London	Shoe Size: 4	Hips: 31	
Drives: No	Hair Color: Blonde		

Talents

COMMERCIAL MODELS, FITNESS MODELS, NEW FACES, EXTRAS



Additional Talents:

6 years of commercial modelling experience for clients such as: Nike, Sky, QVC, JML, BT, No.7,

Boohoo.com, Itv's 'This Morning', Russell Howard, Chessington World of Adventures, and many more.

I can do a strong Liverpoolian accent and Californian. I am also a professional singer with a dance background.

Trainings:

Musical Theatre

Bodywork @ Cambridge performing arts

FOR ANY INQUIRIES PLEASE CONTACT US

0207 834 66 60 - Office

www.fusionmng.com

cast@fusionmng.com

FM FUSION
MANAGEMENT
TALENT & MODEL MANAGEMENT AGENCY