

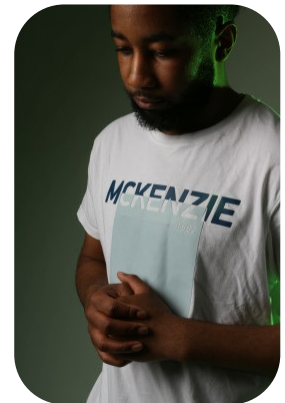
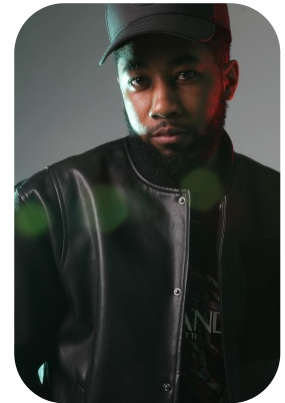


# Kimani W



Age: 21-24	Height: 5ft10inch	Eye Colour: Black	Accent: London
Gender:M	Weight: 82kg	Waist: 89.5 cm	
Location: London	Shoe Size: 9.5	Bust: 97.5 cm	
Drives: No	Hair Color: Black	Hips: 94.5 cm	

Talents  
COMMERCIAL MODELS



Additional Talents:

BIKE TENNIS FOOTBALL BADMINTON CRICKET BASEBALL

FOR ANY INQUIRIES PLEASE CONTACT US

0207 834 66 60 - Office

[www.fusionmng.com](http://www.fusionmng.com)

[cast@fusionmng.com](mailto:cast@fusionmng.com)

