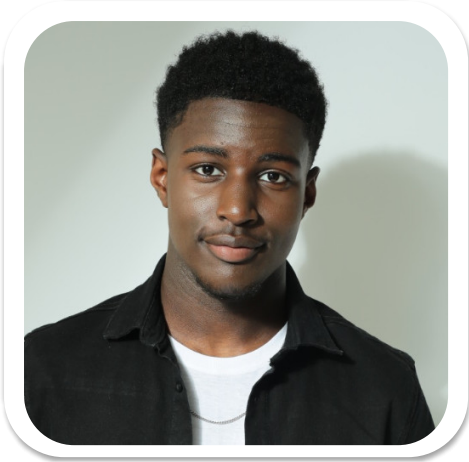


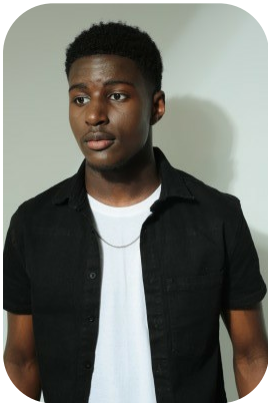


# Kofi Asare



Age: 16-20	Height: 6ft3inch	Eye Colour: Brown	Accent: London
Gender:M	Weight: 87kg	Waist: 34	Bust: 40
Location: Wales	Shoe Size: 11.5	Hips: 42	
Drives: Yes	Hair Color: Black		

Talents  
COMMERCIAL MODELS



Additional Talents:  
BIKE GYM FOOTBALL

FOR ANY INQUIRIES PLEASE CONTACT US

0207 834 66 60 - Office

[www.fusionmng.com](http://www.fusionmng.com)

[cast@fusionmng.com](mailto:cast@fusionmng.com)

**FM** FUSION  
MANAGEMENT  
TALENT & MODEL MANAGEMENT AGENCY