

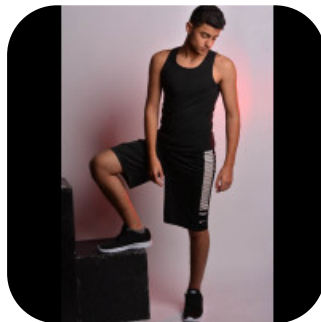


Laith Al-Rawi



Age: 21-24	Height: 6ft1inch	Eye Colour: Brown	Accent: London
Gender:M	Weight: 85kg	Waist: 37.5	Bust: 41
Location: London	Shoe Size: 11.5		
Drives: Yes	Hair Color: Black		

Talents
COMMERCIAL MODELS, TEEN MODELS, EXTRAS



Additional Talents:

Sports: Basketball, Trampolining, Rugby, Athletics, Clay Shooting, Swimming, Tennis, Ping-Pong, Pool (I'm also a fast learner and I excel in sports in general).

Sing: I am a very good singer in areas such as country music, slow songs, hip-hop and pop (there are probably more).

Accents: English (native tongue/mother language),

Martial Arts/Stunts: Boxing, Maui Thai, Taekwondo, and I am very capable of doing stunts.

Extras: if you have any questions on what else I can do, please contact me.

FOR ANY INQUIRIES PLEASE CONTACT US

0207 834 66 60 - Office

www.fusionmng.com

cast@fusionmng.com

FM FUSION
MANAGEMENT
TALENT & MODEL MANAGEMENT AGENCY