

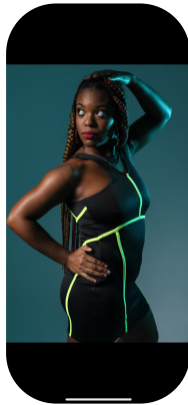
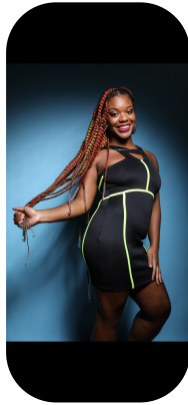
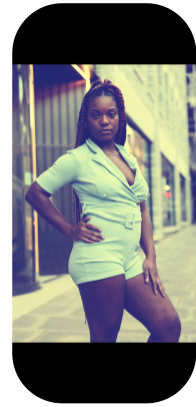
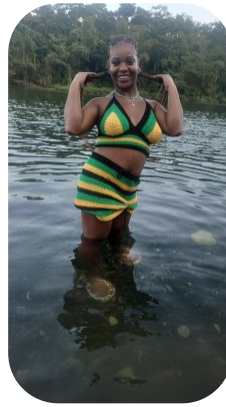


Leah Levine



Age: 25-30	Height: 5ft4inch	Eye Colour: Brown	Accent: London
Gender:F	Weight: 68kg	Waist: 28"	Bust: 35"
Location: London	Shoe Size: 6.5	Hips: 37"	
Drives: Yes	Hair Color: Black		

Talents
COMMERCIAL MODELS, COMMERCIAL DANCERS,
EXTRAS



Additional Talents:

SWIM BIKE

HAIR STYLIST

[Leah Levine Profile](#)

BADMINTON

GOLF

BALLET

TAP DANCING

TRAMPOLINING

GYMNASTICS

FOR ANY INQUIRIES PLEASE CONTACT US

0207 834 66 60 - Office

www.fusionmng.com

cast@fusionmng.com

FM FUSION
MANAGEMENT
TALENT & MODEL MANAGEMENT AGENCY