

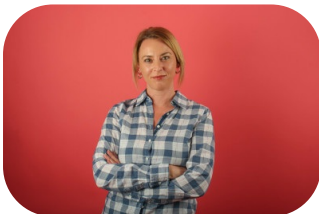
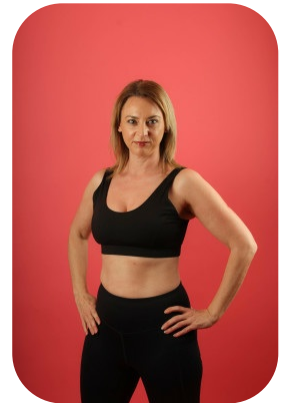


Louise Baines



Age: 41-50	Height: 5ft3inch	Eye Colour: Hazel	Accent: London
Gender:F	Weight: 57kg	Waist: 28ches	
Location: London	Shoe Size: 5	Bust: 30E	
Drives: Yes	Hair Color: Blonde	Hips: 35ches	

Talents
MATURE MODELS



Additional Talents:
SWIM BIKE GYM

FOR ANY INQUIRIES PLEASE CONTACT US

0207 834 66 60 - Office

www.fusionmng.com

cast@fusionmng.com

