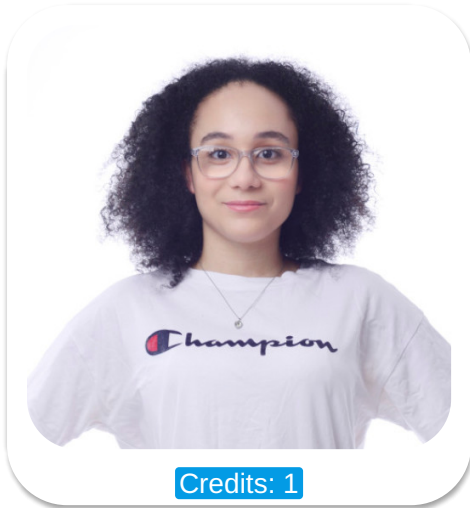




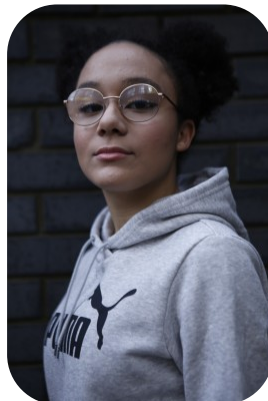
# Luana Pinto



Credits: 1

Age: 21-24	Height: 5ft4inch	Eye Colour: Brown	Accent: Northern
Gender:F	Weight: 39kg	Waist: 28	Bust: 34
Location: London	Shoe Size: 5	Hips: 37	
Drives: No	Hair Color: Black		

Talents  
COMMERCIAL MODELS, EXTRAS



Additional Talents:  
BIKE  
ATHLETICS

Credits:

Years of Production	Production Name	Role
2024	Luana Rafaela	

FOR ANY INQUIRIES PLEASE CONTACT US

0207 834 66 60 - Office

[www.fusionmng.com](http://www.fusionmng.com)

[cast@fusionmng.com](mailto:cast@fusionmng.com)

**FM** FUSION  
MANAGEMENT  
TALENT & MODEL MANAGEMENT AGENCY