

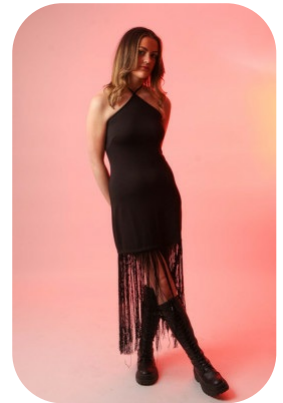
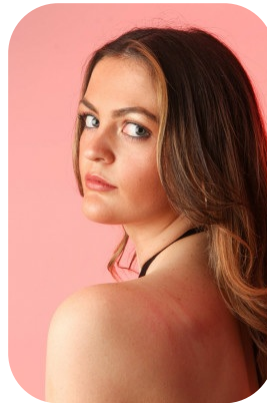


Nancy Beddall



Age: 21-24	Height: 5ft9inch	Eye Colour: Blue	Accent: London
Gender:F	Weight: 59kg	Waist: 27	Bust: 36
Location: London	Shoe Size: 6	Hips: 37	
Drives: Yes	Hair Color: Brunette		

Talents
COMMERCIAL MODELS, EXTRAS



Additional Talents:
SWIM - BIKE

FOR ANY INQUIRIES PLEASE CONTACT US

0207 834 66 60 - Office

www.fusionmng.com

cast@fusionmng.com

