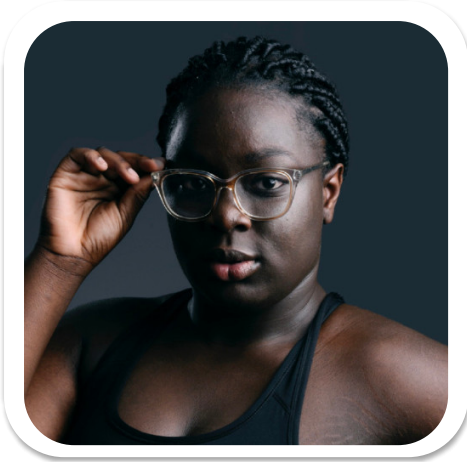


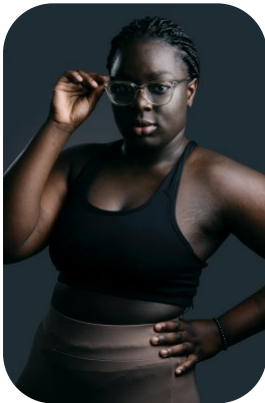
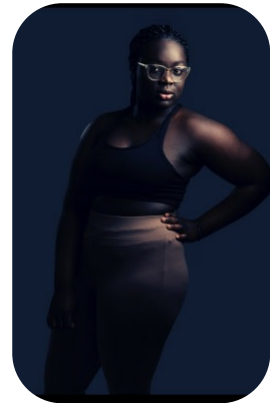


# Nanette Forson



Age: 16-20	Height: 5ft7inch	Eye Colour: Black	Accent: London
Gender:F	Weight: 40kg	Waist: 32	Bust: 41
Location: London	Shoe Size: 8.UK	Hips: 49	
Drives: No	Hair Color: Black		

Talents  
TEEN MODELS, EXTRAS



Additional Talents:  
ROWING - PRESENTING

FOR ANY INQUIRIES PLEASE CONTACT US

0207 834 66 60 - Office

[www.fusionmng.com](http://www.fusionmng.com)  
[cast@fusionmng.com](mailto:cast@fusionmng.com)

