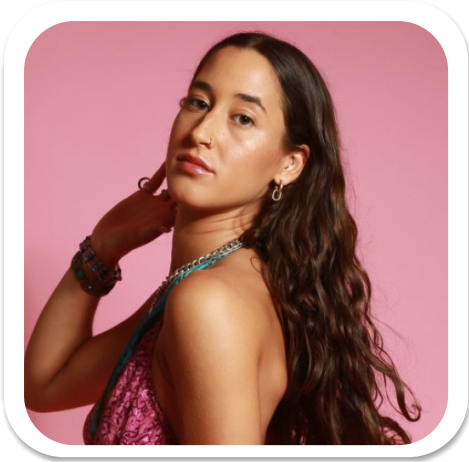


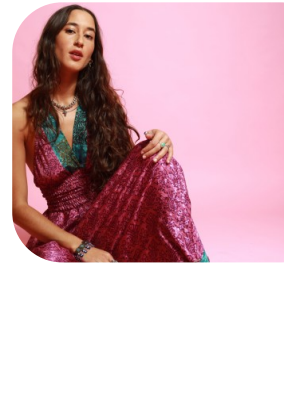
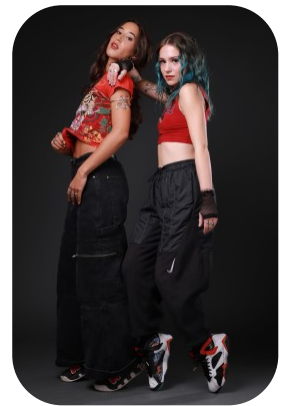


Niyama B



Age: 21-24	Height: 5ft8inch	Eye Colour: Hazel	Accent: London
Gender:F	Weight: 50kg	Waist: 24	Bust: 30
Location: London	Shoe Size: 5.5	Hips: 32	
Drives: No	Hair Color: Brunette		

Talents
COMMERCIAL MODELS, COMMERCIAL DANCERS,
EXTRAS



Additional Talents:

BIKE - SWIM - ROLLERBLADE - ROLLERSKATE - SKATEBOARD - HORSERIDE

GYMNASTICS , HULA HOOP

SING

GUITAR, PIANO, DJ, MUSIC PRODUCING

YOGA

DANCE - BALLET, MODERN, HIP HOP

FOR ANY INQUIRIES PLEASE CONTACT US

0207 834 66 60 - Office

www.fusionmng.com

cast@fusionmng.com

FM FUSION
MANAGEMENT
TALENT & MODEL MANAGEMENT AGENCY