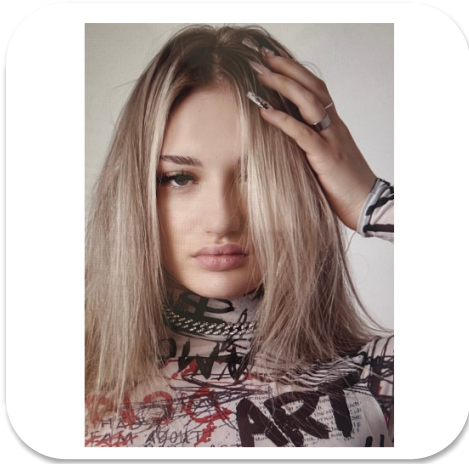




Patricia Chis



Age: 11-15	Height: 5ft7inch	Eye Colour: Green	Accent: London
Gender:F	Weight: 54kg	Waist: 70CM	
Location: London	Shoe Size: 5	Bust: 84CM	
Drives: No	Hair Color: Blonde	Hips: 98CM	

Talents
COMMERCIAL DANCERS, TEEN MODELS, EXTRAS



Additional Talents:

BIKE - SWIM - ROLLERSKATE - SKATEBOARD - SKI - ICESKATE - CLIMB
BADMINTON, HANDBALL

PIANO

GYM FITNESS

BOXING

DANCE - HIP HOP, COMMERCIAL

FOR ANY INQUIRIES PLEASE CONTACT US

0207 834 66 60 - Office

www.fusionmng.com

cast@fusionmng.com

FM FUSION
MANAGEMENT
TALENT & MODEL MANAGEMENT AGENCY